



This addendum forms a part of the Contract Documents and modifies the original Bidding Documents dated **February 12, 2021** as noted below. Acknowledge receipt of this addendum in the space provided on the Official Bid Form. Failure to do so may subject the Bidder to disqualification.

REVISION TO 00 0110 – TABLE OF CONTENTS

Add 06 4100 – Architectural Wood Casework

REVISION TO 06 4100 – ARCHITECTURAL WOOD CASEWORK

Add entire **NEW** Section 06 4100

SECTION 06 4100 – ARCHITECTURAL WOOD CASEWORK

PART 1 - GENERAL

1.01 SECTION INCLUDES

- A. Specially fabricated cabinet units.
- B. Countertops.
- C. Hardware.
- D. Factory Finishing.
- E. Preparation for installing utilities.

1.02 RELATED REQUIREMENTS

- A. Section 06 1000 – Rough Carpentry: Support framing, grounds, and concealed blocking.
- B. Section 12 3600 – Countertops.

1.03 REFERENCE STANDARDS

- A. AWMAC/WI (NAAWS) – North American Architectural Woodwork Standards, U.S. Version 3.1 2017, with Errata (2019).
- B. BHMA A156.9 – American National Standard for Cabinet Hardware 2015.

1.04 SUBMITTALS

- A. See Section 01 3000 – Administrative Requirements, for submittal procedures.
- B. Shop Drawings: Indicate materials, component profiles, fastening methods, jointing details, and accessories.
- C. Product Data: Provide data for hardware accessories.
- D. Verification Samples: Submit 2 by 4 inch sample of each proposed finish material.



PART 2 - PRODUCTS

2.01 CABINETS

- A. Quality Standard: Custom Grade, in accordance with AWI/AWMAC/WI (AWS) or AWMAC/WI (NAAWS), unless noted otherwise.
- B. Plastic Laminate Faced Cabinets: Custom grade.
- C. Cabinets:
 - 1. Finish – Exposed Exterior Surfaces: Decorative laminate.
 - 2. Finish – Exposed Interior Surfaces: Decorative laminate.
 - 3. Finish – Concealed Surfaces: As allowed by AWI grade.
 - 4. Door and Drawer Front Edge Profiles: coordinating 3mm pvc edge banding.
 - 5. Casework Construction Type: Type A – Frameless.
 - 6. Adjustable Shelf Loading: 50 lbs. per sq. ft.
 - a. Deflection: L/144.
 - 7. Cabinet Style: Reveal overlay.
 - 8. Cabinet Doors and Drawer Fronts: Flush style.

2.02 LAMINATE MATERIALS

- A. Provide specific types as indicated.
 - 1. Horizontal Surfaces: HGS, 0.048 inch (1.22 mm) nominal thickness, through color, color as selected, finish as selected.
 - 2. Vertical Surfaces: VGS, 0.028 inch (0.71 mm) nominal thickness, through color, color as selected, finish as selected.
 - 3. Post-Formed Horizontal Surfaces: HGP, 0.039 inch (1.0 mm) nominal thickness, through color, color as selected, finish as indicated.

2.03 COUNTERTOPS

- A. Plastic Laminate Countertops: Medium density fiberboard substrate covered with HPDL, post-formed, with coved integral backsplash.
 - 1. Back and End Splashes: Same material, same construction.
 - 2. Marine plywood required at water source fixtures, to extend 24 inch each side of fixture.

2.04 ACCESSORIES

- A. Adhesive: Type recommended by fabricator to suit application.



- B. Fasteners: Size and type to suit application.

2.05 HARDWARE

- A. Hardware: BHMA A156.9, types as recommended by fabricator for quality grade specified.
- B. Adjustable Shelf Supports: Standard side-mounted system using multiple holes for pin supports and coordinated self rests, polished chrome finish, for nominal 1 inch (25 mm) spacing adjustments.
- C. Drawer and Door Pulls: "U" shaped wire pull, steel with chrome finish, 4 inch centers ("U" shaped wire pull, steel with chrome finish, 100 mm centers).
- D. Drawer Slides:
1. Type: Full extension.
 2. Static Load Capacity: Commercial grade.
- D. Hinges: Butt Institutional 5-knuckle type, BHMA No. 159.6 Grade 1, steel with satin finish, 270 degree opening
1. One pair for doors less than 4 feet high, and 1-1/2 pairs for doors over 4 feet. Conform to SEFA 8PL standards.
 2. Manufacturers:
 - a. Hafele America Co; Five-Knuckle Institutional Hinge: www.hafele.com/us/en
 - b. Richelieu; Overlay Institutional Hinge: www.richelieu.com/us/en.
 - c. Rockford Process Control, LLC; Five Knuckle Overlay Hinges: www.rockfordprocesshingehardware.com.
 - d. Substitutions: See Section 01 6000 - Product Requirements.

2.06 FABRICATION

- A. Assembly: Shop assemble cabinets for delivery to site in units easily handled and to permit passage through building openings.
- B. Edging: Fit shelves, doors, and exposed edges with specified edging. Do not use more than one piece for any single length.
- C. Plastic Laminate: Apply plastic laminate finish in full uninterrupted sheets consistent with manufactured sizes. Fit corners and joints hairline; secure with concealed fasteners. Slightly bevel arises. Locate counter butt joints minimum 2 feet from sink cut-outs. (Locate counter butt joints minimum 600 mm from sink cut-outs.)
- D. Provide cutouts for plumbing fixtures. Verify locations of cutouts from on-site dimensions. Prime paint cut edges.

PART 3 – EXECUTION



3.01 EXAMINATION

- A. Verify adequacy of backing and support framing.
- B. Verify location and sizes of utility rough-in associated with work of this section.

3.02 INSTALLATION

- A. Install work in accordance with AWI/AWMAC/WI (AWS) or AWMAC/WI (NAAWS) requirements for grade indicated.
- B. Set and secure custom cabinets in place, assuring that they are rigid, plumb, and level.
- C. Use fixture attachments in concealed locations for wall mounted components.
- D. Use concealed joint fasteners to align and secure adjoining cabinet units.
- E. Carefully scribe casework abutting other components, with maximum gaps of 1/32 inch (0.79 mm). Do not use additional overlay trim for this purpose.
- F. Secure cabinets to floor using appropriate angles and anchorages.
- G. Securely attach countertops to cabinets using concealed fasteners. Make flat surfaces level; shim where required.
- H. Countersink anchorage devices at exposed locations. Conceal with solid wood plugs of species to match surrounding wood; finish flush with surrounding surfaces.

3.03 ADJUSTING

- A. Adjust installed work.
- B. Adjust moving or operating parts to function smoothly and correctly.

3.04 CLEANING

- A. Clean casework, counters, shelves, hardware, fittings, and fixtures.

END OF SECTION

REVISIONS TO DRAWINGS

Structural Sheet S2 – Foundation Plans

- 1. Added hold downs and changed footing note.

END OF ADDENDUM 3



GIOTA ENGINEERING
 156 CLEAR CREEK DR SUITE 101
 ASHLAND, OR 97520
 PHONE: (541) 552-0290

Willow Wind Renovations
 1497 E. Main St. Ashland, OR 97520

Foundation Plans

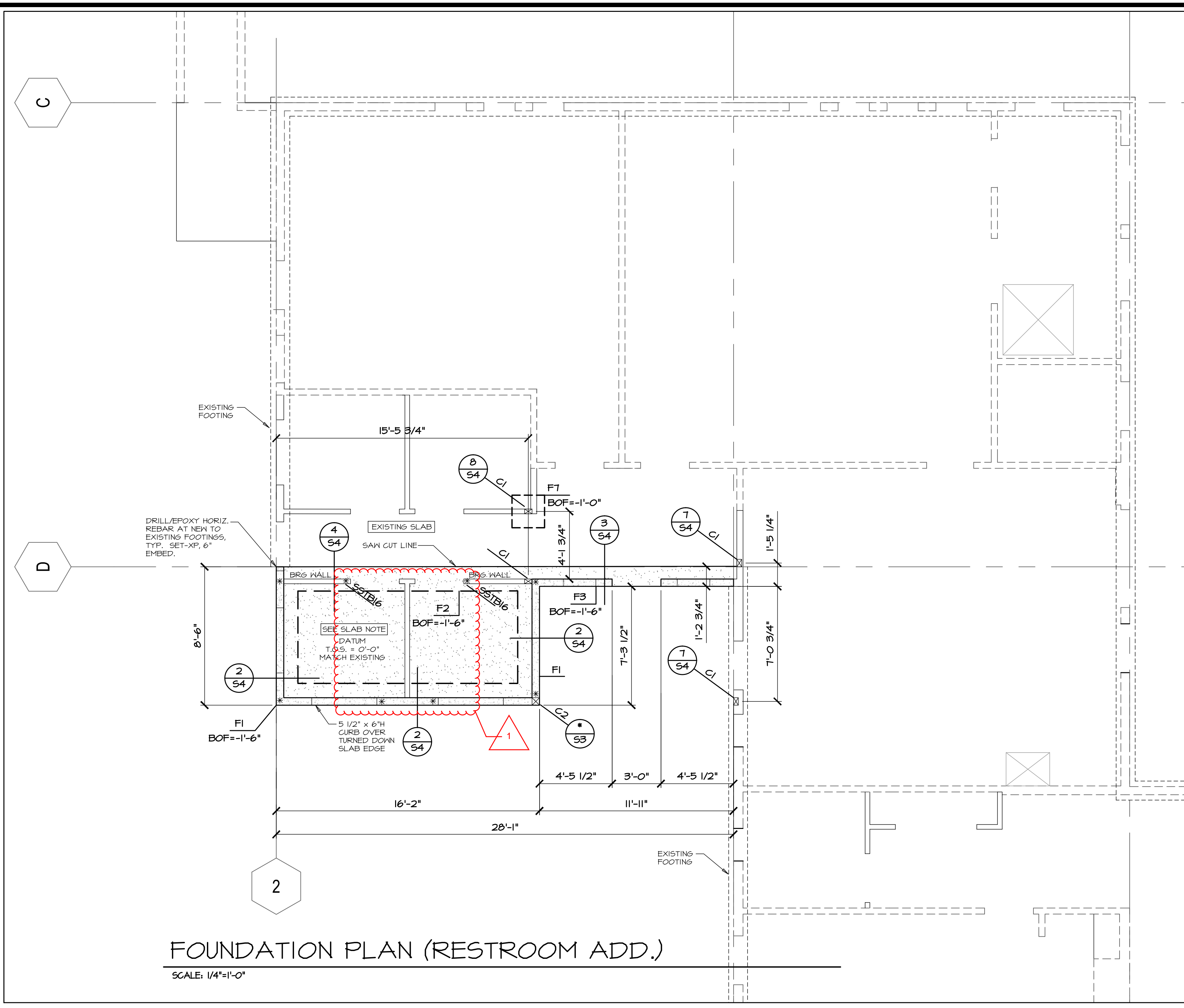
▲ BID ADDENDUM #3 03.19.21

SCALE: 1/4"=1'-0"
 2/1/21

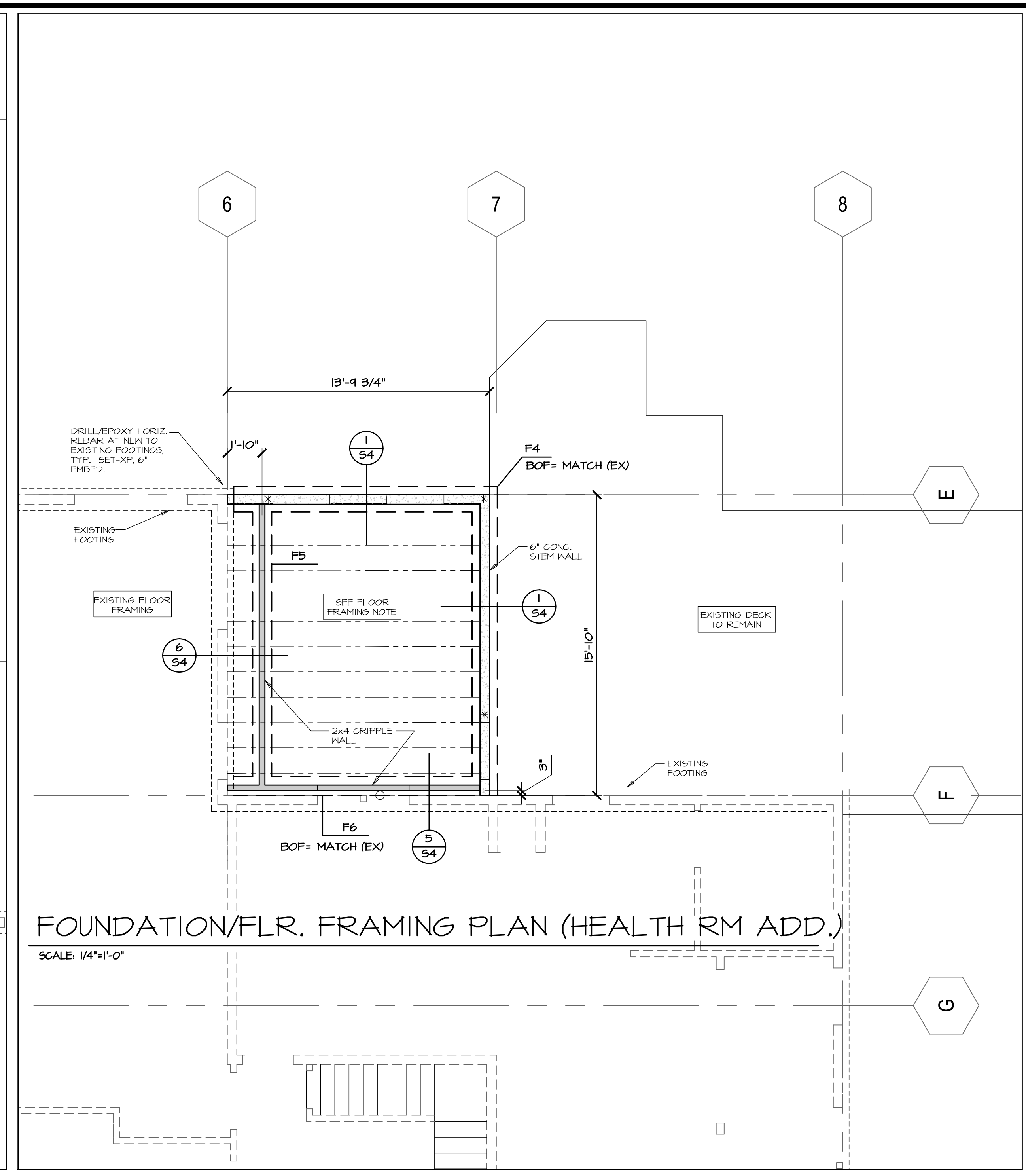
20-051/S-PLANS

S2

SHT. 2 OF 6



FOUNDATION PLAN (RESTROOM ADD.)
 SCALE: 1/4"=1'-0"



FOUNDATION/FLR. FRAMING PLAN (HEALTH RM ADD.)
 SCALE: 1/4"=1'-0"

FOOTING SCHEDULE DO NOT SCALE FOOTINGS

TYPE	SIZE	REINFORCEMENT
F1	1'-4" W x 10" D CONT. MONOLITHIC FTG.	(3) #5 CONT., DTL 2/54
F2	1'-6" W x 10" D CONT. MONOLITHIC FTG.	(4) #5 CONT., DTL 2,4/54
F3	1'-2 3/4" W x 10" D CONT. MONO. FTG.	(2) #4 CONT., DTL 3/54
F4	1'-4" W x 10" D CONT. STRIP FTG.	(3) #4 CONT., DTL 1/54
F5	1'-0" W x 10" D CONT. STRIP FTG.	(2) #4 CONT., DTL 6/54
F6	1'-4" W x 10" D CONT. STRIP FTG.	(4) #5 CONT., DTL 5/54
F7	2'-6" SQ x 12" D SPREAD FOOTING	(4) #5 E.W., DTL 8/54

LEGEND

- INDICATES NEW COLUMN
- INDICATES NEW I-JOIST FLOOR FRAMING
- INDICATES EXISTING STUD WALLS
- INDICATES NEW FOOTINGS
- INDICATES NEW CRIPPLE WALL
- INDICATES NEW STUD OR SHEAR WALL
- INDICATES NEW CONCRETE WALL OR CURB
- INDICATES ASSUMED EXISTING FOUNDATION LINE

FLOOR FRAMING NOTE:

ALL FLOOR FRAMING MEMBERS SHALL BE 11 7/8" BCI 6500 1.8 DF @ 16" OC, MULTI-SPAN. ALL WEB PENETRATIONS PER MNFR SPECS. TOP HANG ON PERIMETER STEM WALL PT PLATE, TYP.
 AT INTERMEDIATE BEARING CRIPPLE WALL, INSTALL BCI BLOCKING EA BAY, TYP.

FLOOR SHEATHING NOTE: DETAIL 8/56

3/4" STRUCT 2, T&G, C-D EXT. GLUE PLYWOOD OR APA RATED OSB EXPOSURE 1, PANEL I.D. 48/24. ATTACH W/ PANEL ADHESIVE AND NAIL TO FRAMING W/ 10D COMMONS @ 6" OC AT ALL SUPPORTED PANEL EDGES AND AT 12" OC AT INTERMEDIATE SUPPORTS. (SIMPSON STRONG-DRIVE HENTL SUBFLOOR SCREENS RECOMMENDED). INSTALL PANELS PERPENDICULAR TO FRAMING AND STAGGER PANELS, TYP.

SLAB NOTE:

4" CONCRETE SLAB W/ #3 @ 16" OC EACH WAY ON VAPOR BARRIER OVER 4" OF 1/2"-3/4" CLEAN CRUSHED CAPILLARY BREAK OVER 3/4" MINUS COMPACTED STRUCTURAL FILL OVER UNDISTURBED NATIVE. SAW JOINTS RECOMMENDED AT 8' OC, DETAIL 3/51. FIBER MESH ADDITIVE FOR CRACK CONTROL AT OWNERS OPTION. DRAINAGE BY CONTRACTOR

UNLESS NOTED OTHERWISE

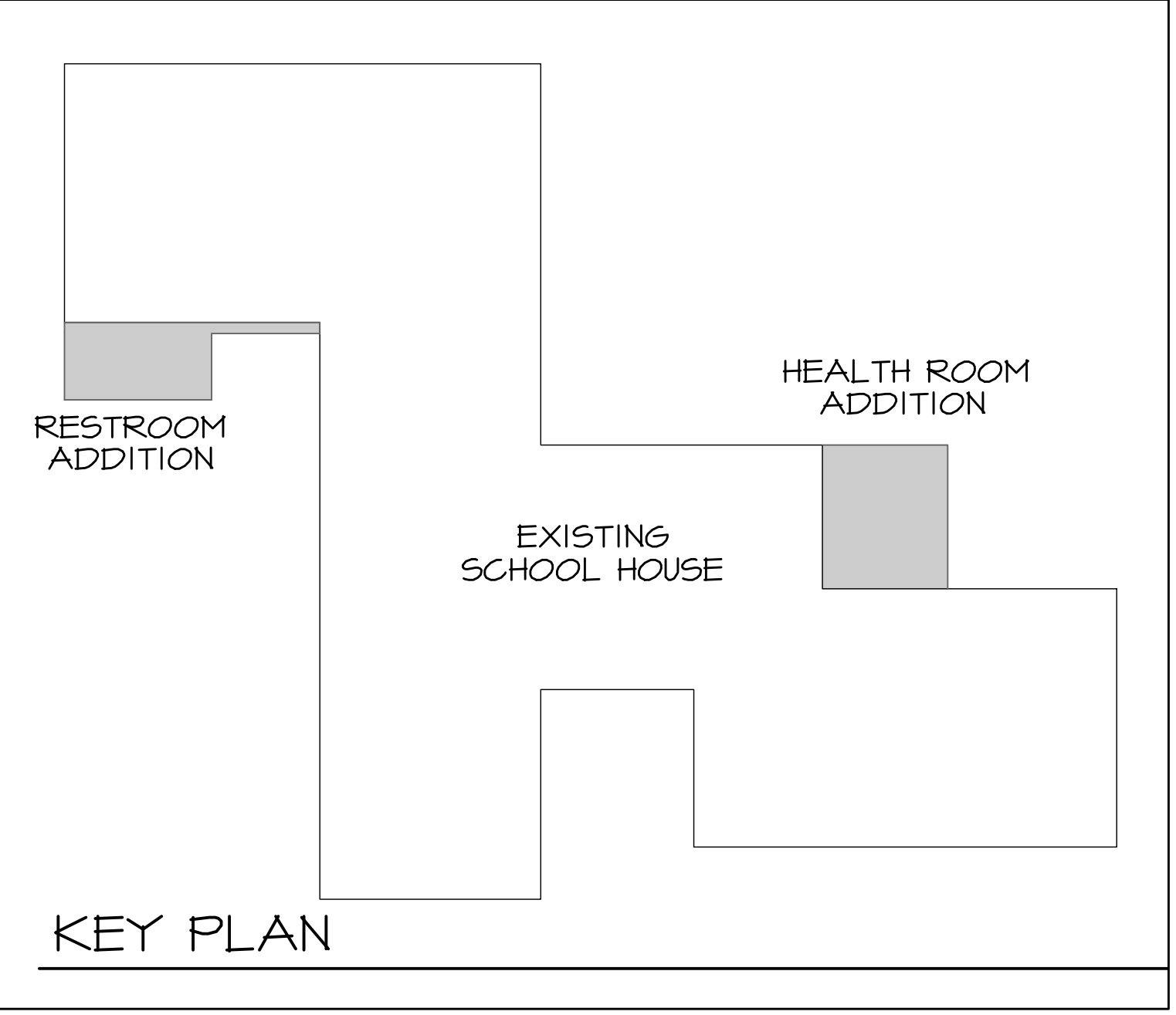
* INDICATES SIMPSON HDU4-SDS HOLDDOWN W/ SB5/8x24" ANCHORS. INSTALL PER MNFR SPEC. DOUBLE 2x6 EDGE STUDS MIN. REQUIRED WITH 16D NAILING @ 8" OC STAGGERED EACH LAYER. SEE DETAIL 9/54

COLUMN SCHEDULE

MK	SIZE	REMARKS
C1	3 1/2 x 5 1/2" VERSA-LAM	2.0 3100 DF
C2	6 x 6 DOUG FIR LARCH	SELECT STRUCTURAL
C3		

PLAN NOTES:

- DIMENSIONS SHOWN ARE TO FACE OF CONCRETE WALL.
- ALL FOOTING AND SLAB SUBGRADES SHALL BE PREPARED PER 2019 OSGC STANDARDS TO ACHIEVE MINIMUM 1500 PSF BEARING CAPACITY. REMOVE ALL EXPANSIVE SOILS AND ORGANICS. OVEREXCAVATE AS REQUIRED TO COMPETENT NATIVE SUBGRADE AND BRING UP WITH COMPACTED STRUCTURAL FILL. CONTRACTOR SHALL VERIFY OR CONSULT WITH GEOTECHNICAL ENGINEER.
- SLAB SUBGRADE SHALL BE COMPACTED CRUSHED ROCK PER CODE STANDARDS AND WITH CAPILLARY BREAK, VAPOR BARRIER AND ANY REQUIRED DRAINAGE BY CONTRACTOR.
- FOOTING # WALL CONCRETE MIX SHALL BE 3000 PSI MIN AT 28 DAYS. PROVIDE MIX DESIGNS TO E.O.R..
- CONCRETE COMPRESSION TESTS REQUIRED.
- TESTING AGENCY TO PROVIDE CONCRETE AND REINFORCEMENT SPECIAL INSPECTIONS.
- VERIFY ALL DIMENSIONS PRIOR TO CONSTRUCTION.
- ALL WATER PROOFING, UNDERSLAB DRAINAGE, PERIMETER FOOTING DRAINS AND MOISTURE PROTECTION IS BY CONTRACTOR.
- HEADER JAMB STUD/POST NOT SHOWN, FIELD VERIFY LOCATIONS.
- CRAWL SPACE ACCESS AT LOCATION PER ARCHITECT. CONTRACTOR TO VERIFY EXISTING STRUCTURAL SYSTEMS IMPACTED BY ANY NEW CONSTRUCTION ARE IN SOUND CONDITION. CONTACT E.O.R. AND ARCHITECT WITH ANY CONCERNS OR DISCREPANCIES.



KEY PLAN